

Customer :

customer

Customer part :

customer part

Comment :

Comment

S1=0.03

S2=0.3

Tmax=440

Tp S2=479.0

PI=0.1

HI=94

Sample =10281.0

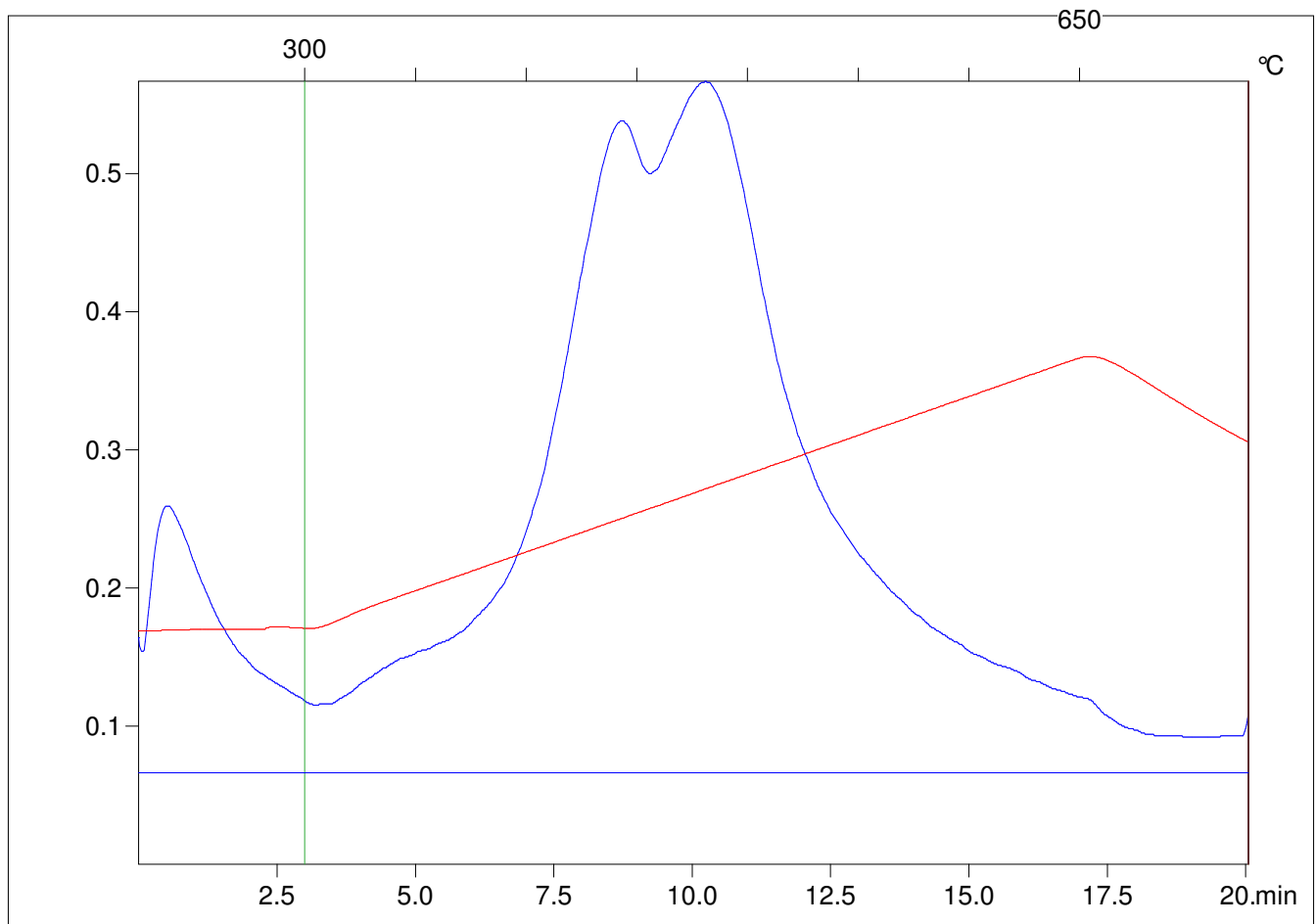
Method =Bulk Rock

Cycle=Basic

KFID(10\*9)=1167

Qty =70.4

TOC=0.32



C:\VINC\PK141015\PK076.R00 : FID pyrolysis graphic

State

Pyro Status

Oxi Status